

SIMPLE ELEGANT BEAUTY IN DESIGN



COLLECTION CATALOG



#### ARTIST BIOGRAPHY

Betsy Frost grew up in North Bennington, Vermont, the eldest daughter of 10 children. She always thought she would be a doctor, as her father had been taking her along on his surgical rounds from the time she was six. But after a discouraging glimpse of the pre-med rigors at Williams College, Betsy majored in psychology instead.

After graduation from Williams in 1987, Betsy pursued a variety of interests. She waited tables in St. Thomas, danced her way around the world with "Up With People," and studied silversmithing in Sweden, and at Skidmore College in Saratoga Springs, NY. She later moved to Boston to be trained for a "real job" enrolling in a master's program in counseling psychology. While in graduate school, Betsy did marketing and sales for a computer company and continued taking classes in silversmithing. It didn't take her too long to discover that she really wanted to design jewelry, so she quit the master's program and began studying at the Massachusetts College of Art.

Betsy graduated with a BA in Metals from the Massachusetts College of Art in 1996 and moved into a studio in an old mill building in the Jamaica Plain section of Boston. Using the tools she inherited from the late Joan Grant, a silversmith and former riding friend, Betsy crafted her first collection. She was quickly accepted into juried wholesale and retail shows. Business has been booming ever since.

Betsy's designs are fluid—reflecting her early training in dance and gymnastics, and sensual—hinting at the female form. One could say her designs have an almost Scandinavian feel. Betsy prizes shape and movement over surface texture and color. She brings her jewelry alive with links and hinges in a way that is comfortable to wear, fun and aesthetically pleasing. She works primarily in sterling silver, and her pieces are either fabricated from sheet into hollow forms, or cast through the lost-wax casting process.

Betsy is inspired by such artists as Matisse & Degas, but also gets many of her ideas from her immediate surroundings—the shape of a flower or the "line" of a piece of furniture. She is mesmerized by patterns in tapestry, wallpaper and carpet and confesses that when she is talking to someone, she is usually studying the wallpaper or designs in the carpet, trying to envision the shapes as beautiful pieces of jewelry.

Betsy currently resides in Ipswich, Massachusetts with her husband Jeff, sons Connor and Rowan, and dogs Jack, Scarlot & Mischa.



PANSY

Large Vermeil Pansy Ring  
R67V \$98

Large Pansy Ring  
R67 \$88

Small Pansy French Wire Earrings  
E67LF \$76

Small Pansy French Wire Earrings in Vermeil  
E67LFV \$96

Small Pansy Post Earrings  
E67L \$76

Small Vermeil Pansy Post Earrings  
E67LV \$96

Small Pansy Pendant on 16" Bead Chain  
P67L \$48

Small Vermeil Pansy Pendant on 16" Bead Chain  
P67LV \$58

Small Pansy Cord Bracelet  
B67LC-BLUE-RED-BLACK-PINK \$48

Calla Lilly French Wire Earrings  
E70F \$76

Small Pansy Ring  
R67L (in Sterling) \$48  
R67LV (in Vermeil) \$58

Small Pansy Bracelet  
B127 \$248

Pansy and Calla Lilly Necklace, 18"  
N69 \$420

Large Pansy Bracelet  
B67 \$320

Full Small Pansy Necklace, 18"  
N127 \$520

Small Full Pansy Bracelet  
B67L FULL \$320

Three Small Pansies on Adjustable Elastic Cord  
P67LC \$96

Large Pansy Pendant on 16" Chain with 2" Extender  
P67 \$88

Large Vermeil Pansy Pendant on 16" Chain with 2" Extender  
P67V \$98

Large Pansy Pendant on Adjustable Elastic Cord  
P67C \$60



GRAPE AND LOTUS

GRAPE

Grape Leaf French Wire Earrings  
ETLC \$80

Grape Leaf Pendant on 16" Snake Chain with 2" Removable Extender  
PTLC \$72

Grape Leaf Necklace This Necklace is 16" with a 2" Removable Extender  
NTLC3 \$210

Grape Leaf French Wire Earrings with 14K Two-Tone  
ETLC2T \$96

Grape Leaf Pendant with 14K Two-Tone on 16" Snake Chain with 2" Removable Extender  
PTLC2T \$80

Grape Leaf Necklace with 14K Two-Tone This Necklace is 16" with a 2" Removable Extender  
NTLC32T \$224

Grape Leaf Two-Tone Bracelet with Orange Moonstone  
BTLC2T-ORANGE MOONSTONE (shown) \$224  
BTLC2T-PLUM CHALCEDONY \$244

LOTUS

Lotus Teardrop Pendant with Trapped Freshwater Pearl on 16" Snake Chain with 2" Removable Extender  
PLOTUSTEAR-LAV-WHITE \$120

Lotus Teardrop French Wire Earring with Trapped Freshwater Pearl  
ELOTUSTEAR-LAV or White \$128  
ELOTUSTEAR (no Pearl) \$62

Lotus French Wire Earring with Trapped Freshwater Pearl  
ELOTUS-LAV or White \$84  
ELOTUS (no Pearl) \$80



## PLUMERIA

BETSYFROSTDESIGN.COM | COLLECTION CATALOG | PAGE 4

Plumeria Toggle Necklace with Blue Agate and White Freshwater Pearl  
This Necklace is 17.5"  
**NFLT-BLUE AGATE \$180**  
Plumeria Toggle Bracelet with Labradorite and Pink Freshwater Pearl  
This Necklace is 17.5"  
**BFLT-LABRADORITE (shown) \$280**  
-AQUA CHAL **\$280**

Plumeria Toggle Bracelet with Blue Quartz  
**BFLT-BLUE QTZ \$148**  
Plumeria Toggle Bracelet with Pink Crystals  
**BFLT-PINK CRYSTALS \$136**  
Tiny Hydrangea Posts  
**EHYDP \$44**  
Plumeria Toggle Necklace with Labradorite and Pink Freshwater Pearl, 17.5"  
**NFLT-LABRADORITE \$288**  
-AQUA CHALCEDONY **\$288**

Small Plumeria Post Earrings  
**EFLSP \$56**  
Plumeria Pendant with Pink Freshwater Pearl on 16" Snake Chain with 2" Removable Extender  
**PFL-PINK PRL \$90**  
Plumeria with White Freshwater Pearl on 16" Snake Chain with 2" Removable Extender  
**PFL-WHITE PRL \$90**

Small Plumeria Pendant with Freshwater Pearl on 16" Bead Chain  
**PFLS-PINK \$48**  
-WHITE  
Small Plumeria French Wire Earrings  
**EFLSF \$56**

Small Plumeria Post Earrings with Freshwater Pearl  
**EFLSP-WHITE PEARL (not shown) \$30**  
-PINK PEARL (not shown) **\$60**  
Small Plumeria French Wire Earring with Freshwater Pearl  
**EFLSF-PINK PRL \$60**  
-WHITE PRL **\$60**



## PETALS AND BRANCHES

### PETALS

Petal Ring with 14K Two-Tone Hydrangea  
**RPETAL2T \$64**

Petal Cuff with 14K Two-Tone Hydrangea  
**C-PETAL2T \$260**

Small Petal French Wire Earring with 14K Two-Tone Hydrangea  
**EPETALS2T \$64**

Petal Pendant with 14K Two-Tone Hydrangea on 16" Cable chain  
**PPETAL2T \$60**

Small Petal Pendant with 14K Two-Tone Hydrangea on 16" Cable Chain  
**PPETALS2T \$48**  
**BRANCHES**  
Branch Necklace, 17"  
**N68 \$420**

**RPETAL2T**



**C-PETAL2T**

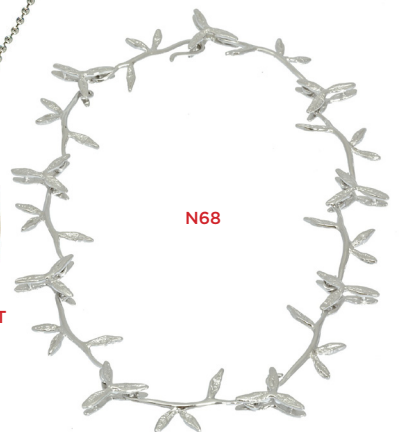


**EPETALS2T**



**PPETAL2T**

**PPETALS2T**



**N68**

## ACORNS

### ACORNS

Small Acorn Pendant on 16" Bead Chain  
**PACORN-S \$48**

Small Acorn French Wire Earrings  
**EACORN-SF \$52**

Oak and Half Acorn Pendant on 16" Snake Chain with 2" Removable Extender  
**POAK1/2ACORN \$80**

Small Acorn Pendant with 14K Two-Tone on 16" Bead Chain  
**PACORN-S-2T \$50**

Small Acorn 14K Two-Tone French Wire Earrings  
**EACORN-SF2T \$56**

Oak and Half Acorn Pendant with 14K Two-Tone Acorn on 16" Snake Chain with 2" Removable Extender  
**POAK1/2ACORN2T \$84**

Oak Leaf Earrings on French Wire  
**EOAK-F \$48**

Small Acorn Bracelet on Red Quartz  
**BACORN3-RED QTZ \$148**

Oak Leaf and Acorn Bracelet  
**BOAKACORN \$184**



**PACORN-S**



**EACORN-SF**



**POAK1/2ACORN**



**PACORN-S-2T**



**EACORN-SF2T**



**EOAK-F**

**BACORN3-RED QTZ**



**BOAKACORN**





**SUNBURST  
MEDALLION**

Sunburst Medallion  
Pendant on  
18" Leather Cord  
with 2" Extender  
**P215C \$180**

Sunburst Medallion  
on 18" Snake Chain  
with 2" Extender  
**P215 \$228**

**P215C****P215****OLIVES**

3 Olives on 16" Snake Chain  
with 2" Extender  
**P74 \$112**

Olive Posts  
**E74P \$76**

Olives on Adjustable Elastic  
Cord  
**P74C \$92**

Olives on Hoops  
**E74H \$76**

**P74****P74C****E74H****HEARTS**

Skinny Heart Pendant on 16"  
Snake Chain with 2" Extender  
**P202 \$76**

Skinny Heart Pendant on 16"  
Leather Cord with 2" Ex-  
tender  
**P202C \$52**

Skinny Heart Post Earring  
**E202P \$72**

Skinny Hearts  
French Wire  
Earrings  
**E202F \$72**

Fat Heart Pendant on  
16" Snake Chain with  
2" Removable Extender  
**P29 \$76**

Fat Heart Pendant on Black  
Elastic Adjustable Cord  
**P29C \$48**

Fat Heart Hoop Earrings  
**E29H (High Polish) \$76**  
**E29HM (Matte Finish) \$76**

Fat Heart French  
Wire Earring  
**E29F \$76**

Fat Heart Ball Post Earrings  
**E29 \$80**

Mother & Daughter  
Bracelets  
**B257 \$220**  
(Mother  
Bracelet 7.5")  
**B257L \$168**  
(Daughter  
Bracelet 6")

**P202****P202C****E202P****E202F****P29****P29C****E29H****E29F****E29****B257L****B257****FROSTING**

Hollow Frosting Pendant  
w/ 16" Snake Chain with  
2" Extender  
**PFROST-HOLLOW \$98**

Frosting Bracelet  
**B12FROSTING \$184**

Frosting French Wire Earrings  
**E12FROSTING \$72**

**CUPCAKE**

Cupcake French Wire  
Earrings with Freshwater Pearl  
**E333L-WHITE (shown) \$96**  
**P333L-PINK \$96**

Small Cupcake French Wire  
Earring with Freshwater Pearl  
**333SF-WHITE (shown) \$76**  
**E333SF-PINK \$76**

Cupcake Ring with  
Freshwater Pearl  
**R333-PINK (shown) \$180**  
**R333-WHITE \$180**

Small Cupcake Post Earring  
with Freshwater Pearl  
**E333SP-WHITE \$76**  
**E333SP-PINK (shown) \$76**

Small Cupcake Pendant  
with Freshwater Pearl  
on 16" Cable Chain  
**P333S-WHITE (shown) \$68**  
**P333S-PINK \$68**

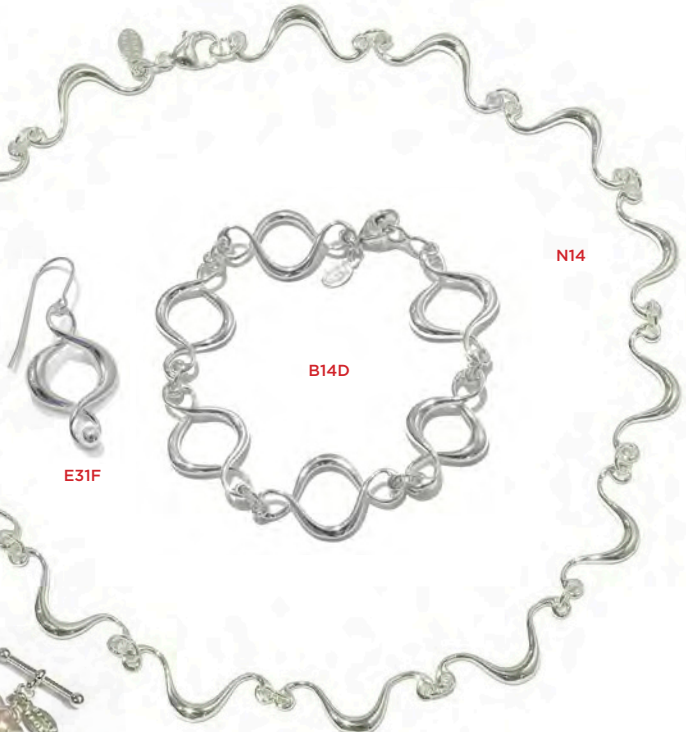
Cupcake Pendant with  
Freshwater Pearl on 16"  
Snake Chain with 2"  
Removable Extender  
**P333L-PINK \$96**  
**P333L-WHITE (shown) \$96**

Cupcake Bracelet with  
Freshwater Pearl  
**B333S-PINK (shown): \$224**  
**B333S-WHITE: \$224**

**BELL CURVE**

Bell Curve Necklace, 16"  
with 2" Removable Extender  
**N14M (Matte Finish) \$244**  
**N14 (High Polish) (shown) \$244**

Double Bell Curve Bracelet  
**B14D (High Polish shown) \$232**  
**B14DM (Matte Finish) \$232**

**PFROST-HOLLOW****E12FROSTING****B12FROSTING****R333****E333L****E333SP****P333S****P333L****E333SF****N14****B14D****E31F****B333S**

## MOON CHARM

Moon Charm Pendant on 16" Snake Chain with 2" Extender  
**P28 (High Polish) \$76**  
**P28M (Matte) (shown) \$76**

Moon Charm Pendant on Adjustable Elastic Cord  
**P28C (High Polish shown) \$48**  
**P28CM (Matte) \$48**

Moon Charm French Wire Earrings with 14K Two-Tone  
**E28F2T (shown) \$84**  
*(with two-tone high polish)*  
**E28F2TM**  
*(with two-tone matte)* **\$84**

Moon Charm Ball Post Earrings  
**E28 (High Polish) \$80**  
**E28M (Matte Finish shown) \$80**

Moon Charm Ball Post Earring with 14k

Two-Tone  
**E282T \$88**  
*(two tone in high polish)*  
**E282TM (shown) \$88**  
*(two tone matte finish)*

Moon Charm French Wire Earrings  
**E28F (High Polish shown) \$72**  
**E28FM (Matte Finish) \$72**

Moon Charm Pendant with 14K Two-Tone on 16" Snake Chain with 2" Extender  
**P282T (High Polish shown) \$80**  
**P282TM (Matte) \$80**

Moon Charm Necklace - This Necklace is 16" with a 2" Removable Extender  
**N28 (High Polish shown) \$448**  
**N28M (Matte) \$448**

Moon Charm Bracelet  
**B28 (High Polish) \$224**  
**B28M (Matte Finish shown) \$224**



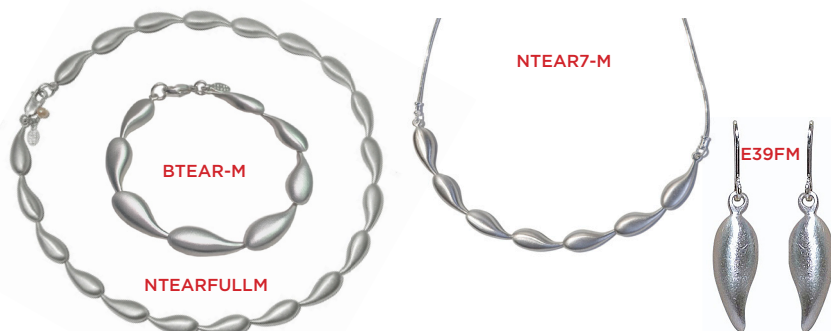
## TEARDROP

Full Teardrop Necklace, 16" with 2" Removable Extender  
**NTEARFULLM (Matte Finish shown) \$440**  
**NTEARFULL (High Polish) \$440**

Teardrop Bracelet  
**BTEAR-M \$184**  
*(in Matte Finish as shown)*  
**BTEAR-(in High Polish) \$184**

Teardrop Necklace with Chain This Necklace is 16" with a 2" Removable Extender  
**NTEAR7-M \$210**  
*(in Matte Finish as shown)*  
**NTEAR7 (in High Polish) \$210**

Solid Teardrop French Wire Earring  
**E39F (in High Polish) \$80**  
**E39FM (Matte Finish as shown) \$80**



## CAGED

## ROUND CAGE

Round Cage Earring on French Wire with Trapped Freshwater Pearl  
**E208-PRL \$88**

Round Cage French Wire Earrings with Trapped Balls  
**E208-GFB \$76**  
*(with Gold Filled Balls as shown)*  
**E208-SSB \$76**  
*(with Sterling Silver Balls as shown)*

Round Cage French Wire Earrings with Trapped Stones  
**E208-STONE \$76**  
 -GREEN CZ  
 -PURPLE CZ  
 -CHAMPAGNE CZ  
 -RED CZ (shown)

Round Cage Pendant with Trapped Stone on 16" Snake Chain with 2" Removable Extender  
**P208-STONE \$76**  
 -GREEN CZ (shown)  
 -RED CZ  
 -PURPLE CZ  
 -CHAMPAGNE CZ

Round Cage Necklace with Trapped Stone  
**N208-STONE \$224**  
 -CHAMPAGNE CZ (shown)  
 -PURPLE CZ  
 -RED CZ  
 -GREEN CZ

Round Cage Bracelet with Trapped Stones  
**B208-STONE \$196**  
 -RED CZ  
 -CHAMPAGNE CZ  
 -GREEN CZ  
 -PURPLE CZ (shown)

Round Cage Pendant with Trapped Freshwater Pearl On 16" Snake Chain with 2" Removable Extender  
**P208-PRL \$80**

Round Cage Pendant with Trapped Gold Filled or Sterling Ball on 16" Snake Chain with 2" Removable Extender  
**P208-GFB (shown) \$76**  
*(with Gold Filled Balls)*  
**P208-SSB \$76**  
*(with Sterling Silver Balls)*

Round Cage Necklace with Trapped Gold Filled Ball, Sterling Silver Ball or Pearl on 16" Snake Chain with 2" Removable Extender  
**N208-GFB (shown) \$244**  
*(with Gold Filled Balls)*  
**N208-SSB \$244**  
*(with Sterling Silver Balls)*  
**N208-PRL \$244**  
*(with Freshwater Pearl)*

Round Cage Bracelet with Trapped Balls  
**B208-GFB (shown) \$196**  
*(with Gold Filled Balls)*  
**B208-SSB \$196**  
*(with Sterling Silver Balls)*

Round Cage Bracelet with Trapped Freshwater Pearl  
**B208-PRL \$216**





**LARGE CAGE**

This collection is available in Matte or High Polish—Please put "M" after the Style Number if you prefer Matte Finish.

Large Cage Pendant with Trapped Ball on 16" Snake Chain with 2" Removable Extender  
**P47B-GFB (with Trapped Gold Filled Balls shown) \$120**  
**P47B-SSB (with Trapped Sterling Silver Balls) \$120**

Large Ball and Cage Ring  
**R47B-GFB (shown) \$120 (with Gold Filled Balls)**  
**R47B-SSB \$120 (with Sterling Silver Balls)**  
**R47B-PRL \$124 (with Freshwater Pearl)**

Large Caged Stone Ring  
**R47S-CHOOSE STONE COLOR \$120**

Double Cage Pendant with Trapped Ball or Pearl on 18" Chain with 2" Extender  
**P372-GFBM \$168 (with Gold Filled Balls shown in Matte Finish)**  
**P372-SSB \$168 (with Sterling Silver Balls)**

Double Cage Pendant with Trapped Freshwater Pearl on 18" Snake Chain with 2" Removable Extender  
**P372-PRL \$168**

Large Cage Pendant with Trapped Stone on 16" Snake Chain with 2" Removable Extender  
**P47S-CHOOSE STONE COLOR \$120**

Large Cage French Wire Earrings with Trapped Ball  
**E47FB-GFB \$128 (with Gold Filled Balls as shown)**  
**E47FB-SSB \$128 (with Sterling Silver Balls)**

Large Cage French Wire Earrings with Trapped Stone  
**E47F-CHOOSE STONE COLOR \$128**

Large Cage Necklace with Trapped Stones, Freshwater Pearls, Gold Filled or Sterling Balls

This Necklace is 16" with 2" Removable Extender  
**N47B-GFB \$520 (with Gold Filled Balls)**  
**N47B-SSB \$520 (with Sterling Silver Balls)**  
**N47B-PRL \$568 (with Freshwater Pearl)**  
**N47S (shown) \$520 CHOOSE STONE COLOR**

Large Caged Bracelet with Trapped Stone  
**B47S-CHOOSE STONE COLOR \$288**

Large Cage Half Necklace with Trapped Gold Filled or Sterling Balls, or Freshwater Pearls  
 This Necklace is 16" with a Removable 2" Extender.  
**N47BHALF-GFB \$320 (with Gold Filled Balls as shown)**  
**N47BHALF-SSB \$320 (with Sterling Silver Balls)**  
**N47HALF-PRL \$344 (with Freshwater Pearl)**

Large Cage Bracelet with Trapped Balls or Freshwater Pearls  
**B47B-GFB \$288 (with Gold Filled Balls as shown)**  
**B47B-SSB \$288 (with Sterling Silver Balls)**  
**B47-PRL \$312 (with Freshwater Pearl)**

Large Cage French Wire Earring with Trapped Freshwater Pearl  
**E47F-PRL \$136 (with Freshwater Pearl)**

Large Caged Pendant with Trapped Freshwater Pearl on 16" Snake Chain with 2" Removable Extender  
**P47-PRL \$124 (with Freshwater Pearl)**



**STONE COLOR OPTIONS:**  
 PURPLE, LAVENDER, BLUE, RED, CHAMPAGNE  
 ALSO CLEAR CZ & PINK CZ

P47B-GFB



R47B



P372-GFBM



P372-PRL



R47S



N47S



B47S

E47FB-GFB



P47S



B47S

E47FS



N47BHALF-GFB

B47B-GFB



E47F-PRL



P47-PRL



**LIGHT CAGE**

Light Cage Pendant with Trapped Stone on 16" Snake Chain with 2" Removable Extender

**P284-CHOOSE STONE**  
**COLOR \$76**

Light Cage French Wire Earring with Trapped Freshwater Pearl, Gold Filled Ball or Sterling Silver Ball

**E284-PRL (shown) \$88**

**(with Freshwater Pearl)**

**E284-GFB \$80**

**(with Gold Filled Balls)**

**E284-SSB \$80**

**(with Sterling Silver Balls)**

Light Cage Pendant with Trapped Freshwater Pearl, Gold Filled Ball or Sterling Silver Ball - This Pendant is on a 16" Snake Chain with a 2" Removable Extender.

**P284-PRL (shown) \$80**  
**(with Freshwater Pearl)**

**P284-GFB \$76**

**(with Gold Filled Balls)**

**P284-SSB \$76**

**(with Sterling Silver Balls)**

Light Cage French Wire Earring with Trapped Stone

**E284-CHOOSE STONE**

**COLOR \$80**

Light Cage Necklace with Trapped Gold Filled Ball, Sterling Silver Ball, or Freshwater Pearl - This Necklace is 16" Long with a 2" Removable Extender

**N284-GFB (shown) \$232**  
**(with Gold Filled Ball)**

**N284-GFB \$232**

**(with Sterling Silver Ball)**

**N284-PRL \$248**

**(with Freshwater Pearl)**

Light Cage Bracelet with Trapped Stone  
**B284-CHOOSE STONE**  
**COLOR \$196**

**STONE COLOR OPTIONS:**

PURPLE, LAVENDER, BLUE, RED, CHAMPAGNE ALSO CLEAR CZ & PINK CZ

**XO COLLECTION**

Small XO Pendant on 16" Chain

**P238L-LAVENDER (shown) \$80**

-BLUE

-CLEAR

-PINK

Small XO French Wire Earrings with Trapped Stone

**E238L-BLUE CZ (shown) \$96**

-CLEAR CZ

-PINK CZ

-LAVENDER CZ

XO Bracelet with Trapped Stones

**B238-CLEAR CZ (shown) \$440**

-PINK CZ

-LAVENDER CZ

-BLUE CZ

Large XO Pendant with Trapped Stones on 16" Snake Chain with 2" Removable Extender

**P238-PINK CZ (shown) \$96**

-CLEAR CZ

-LAVENDER CZ

-BLUE CZ

Large XO Pendant with Trapped Stones on 16" Leather Cord with 2" Removable Extender

**P238C-CLEAR CZ \$84 (shown)**

-PINK CZ

-BLUE CZ

-LAVENDER CZ

**SPINNING BALLS**

Spinning Ball Pendant with Trapped Sterling Balls

**P106-SSB (shown) \$220**

**(on 18" Snake Chain with 2" Removable Extender)**

**P106-SSBC \$196**

**(on 18" Leather Cord with 2" Removable Extender)**

Spinning Ball Ring

**R107-SSB-CLEAR CZ \$280**

**(with Sterling Silver Balls and Clear CZ)**

**R107-SSB \$220**

**(with Sterling Silver Balls)**





**MUSIC**

Small G Clef Pendant  
on Adjustable Black Elastic  
Cord  
**P355LC \$50**

Small G Clef Pendant  
On 16" Chain  
**P355L \$72**

Large G-Clef Pendant on  
Snake Chain or Leather Cord  
**P355-18" SNAKE CHAIN  
(shown) \$88**  
with 2" Removable Extender  
**P355C-18" LEATHER CORD \$64**  
with 2" Removable Extender

Small G Clef French Wire  
Earrings  
**E355LF \$76**

Bass Clef Cuff Links  
**C356 \$60**

Bass Clef Pendant on Snake  
Chain or Leather Cord  
**P356C - 16" Leather Cord \$60**  
with 2" Removable Extender  
(shown)  
**P356 - 16" Snake Chain with  
2" Removable Extender \$84**



**EQUESTRIAN**

Snaffle Bit Bracelet  
**B350 \$264**

Snaffle Bit Pendant on  
16" Black Leather Cord  
with 2" Removable Extender  
**P350C \$96**

Snaffle Bit Bracelet on 2.5mm  
Snake Chain  
**B350S \$144**

Stirrup French Wire Earrings  
**E352 \$40**

Stirrup Pendant  
on 16" Bead Chain  
**P352 \$36**

Snaffle Bit Bracelet on  
Black Leather Cord  
**B350C \$120**



**NAMASTE' / YOGA**

Yoga Charm 2-in-1 Pendant  
Wear this pendant at 32" or  
double it with a toggle at 16"  
--It's a Two-in-One!  
**PYOGA2N1 \$110**

Namaste French  
Wire Earrings  
**ENAMASTE' \$40**

Namaste Pendant  
On 16" Bead Chain  
**PNAMASTE' \$36**



**CIRCLES AND LOOP**

**CIRCLES**

Circle French Wire Earrings  
**E40F \$76**

Circle Pendant on Black  
Elastic Adjustable Cord  
**P20C \$56**

Circle Pendant on 16" Snake  
Chain with 2" Removable  
Extender  
**P20 \$84**

Circle Ball Posts Earrings  
**E40 \$80**

**LOOP**

Double Loop  
Pendant on 16"  
Snake Chain with  
2" Removable Extender  
**P177 \$88**

Loop Post Earring  
**E177 \$98**

Double Loop Pendant  
on Black Adjustable E  
lastic Cord  
**P177C \$60**



**MUSSEL SHELL**

Mussel Shell Pendant on  
16" Bead Chain  
**P282-PURPLE PRL (shown) \$48**  
-LAVENDER PRL  
-WHITE PRL  
-GREY PEARL  
**P282-AQUA CHALCEDONY**  
(shown) \$52  
-BLUE CHALCEDONY

Mussel Shell Earrings with  
Freshwater Pearl or Stone  
**E282-BLUE CHALCEDONY,**  
**WHITE PRL, LAVENDER PRL,**  
**GREY PEARL (all shown) \$64**

Mussel Shell Earring with  
Freshwater Pearl and Stone  
**E282VERT-BLUE CHALCEDONY**  
(shown) \$80  
-LABRADORITE  
-PLUM CHALCEDONY  
-AMETHYST  
-AQUA CHALCEDONY  
-BLUE QUARTZ

Mussel Shell Bracelet with  
Labradorite and Freshwater  
Pearl

**BM1-LABRADORITE \$280**

Mussel Shell Bracelet  
with Blue Quartz and  
Freshwater Pearl

**BM1-BLUE QUARTZ \$148**

Mussel Shell Necklace  
with Freshwater Pearl  
This Necklace is 17.5"

**N282-LAVENDER (shown) \$360**  
-WHITE  
-GREY

"Bowl of Clams" Ring  
with Freshwater Pearl  
**R282-WHITE/OX (shown)**  
**\$180**

(with White Pearl, Oxidized)

**R282-LAV/HP \$180**

(with Lavender Pearl,

High Polish)

**R282-WHITE/HP \$180**

(with White Pearl,

High Polish)

Mussel Shell Bracelet with  
Trapped Freshwater Pearl

**B293-WHITE \$320**

-LAVENDER

-GREY

(all shown)**P282**



**E282-BLUE CHALCEDONY**



**E282**



**E282-VERT with Pearl and Stone**



**P282-AQUA CHALCEDONY**



**E282**



**E282**



**BM1-LABRADORITE**



**BM1-BLUE QUARTZ**

**N282**



**R282**

**B293**



**CLAMSHELL**

Clamshell Pendant with  
Aqua Chalcedony on  
16" Cable Chain  
**PC2-AQUA CHAL \$74**

Clamshell French  
Wire Earrings with  
Aqua Chalcedony  
**EC2-AQUA CHAL \$88**

Clamshell Pendant with  
Trapped Pearl on 16"  
Cable Chain  
**PC2 \$72**

Clamshell French Wire  
Earring with Pearl  
**EC2 \$84**

Clamshell Bracelet with  
Crystals and Pearl  
**BC2-POWDER BLUE CRYSTALS (shown) \$124**  
-PERIWINKLE BLUE CRYSTALS  
-GREEN CRYSTALS

Clamshell Bracelet with  
Stones and Pearl  
**BC2-AQUA CHALCEDONY (shown) \$148**  
-LABRADORITE

**PC2-AQUA CHAL**



**EC2AQUACHAL**



**PC2**



**EC2**



**BC2 POWDER BLUE CRYSTALS**



**BC2 AQUA CHALCEDONY**





**SAND DOLLAR**

Two-in-One Sand Dollar Pendant with Aqua Chalcedony and Pearl on 32" Silver and Apatite Chain. Pendant can be worn either 32" or doubled at 16"  
**PSLT2N1-APATITE \$164**

Large Sand Dollar Pendant with Blue Quartz, Lapis and Pearl on 16" Chain with 2" Removable Extender  
**PSL2-LAPIS, BLUE QUARTZ AND PEARL \$128**

Large & Small Sand Dollar Pendant with Stones on 16" Chain with 2" Removable Extender  
**PS, S&L-GREEN CHALCEDONY (shown) \$136**  
-PLUM CHALCEDONY  
-AMETHYST  
-LABRADORITE  
-AQUA CHALCEDONY  
-CARIBBEAN BLUE CHALCEDONY  
-PERIWINKLE BLUE CRYSTAL  
-GREEN CRYSTAL

Large Sand Dollar Pendant with Pearl and Stone on 16" Snake Chain with 2" Removable Extender  
**PSL1-PLUM CHALCEDONY (shown) \$120**  
-AQUA CHALCEDONY  
-LABRADORITE  
-AMETHYST  
-GREEN CRYSTAL  
-PERIWINKLE BLUE CRYSTAL  
-POWDER BLUE  
-GREEN CHALCEDONY  
-CARIBBEAN BLUE CHALCEDONY (shown)

Large Sand Dollar Pendant with Small Vermeil Sand Dollar and Pearl on 16" Chain with 2" Removable Extender  
**PSL&SV \$136**

Silver and 14K PLATED Extra Large Sand Dollar Pendant on a PLATED 18" Chain \*\*THIS IS NOT SOLID STERLING  
**PLAPSXL2T \$32**

Medium & Large Sand Dollar Pendant on 16" Wheat Chain with 2" Removable Extender  
**PS, M&L \$98**

Medium & Small Sand Dollar French Wire Earrings  
**ES, M&S \$88**

Medium Sand Dollar French Wire Earring  
**ESMF \$72**

Small Sand Dollar French Wire Earrings  
**ESSF \$44**

Small Sand Dollar on French Wire Earring with Pearl  
**ESSF-PRL \$56**

Small Sand Dollar French Wire Earrings with Stone  
**ESSF-STONE \$64**  
-PLUM CHALCEDONY  
-BLUE CHALCEDONY  
-AQUA CHALCEDONY (shown)  
-PERIWINKLE BLUE CRYSTAL  
-GREEN CRYSTAL

Small Sand Dollar Posts  
**ESSP \$44**

Large, Medium & Small Sand Dollar Pendant on 16" Wheat Chain with 2" Removable Extender  
**PS-S, M&L \$124**

Small Sand Dollar Bracelet  
**BSS3-BLUE QUARTZ (shown) \$148**  
-AQUA CHALCEDONY \$160

Large Sand Dollar Toggle Bracelet  
**BSLT-BLUE CHALCEDONY (shown) \$280**  
**BSLT-CARIBBEAN BLUE CHALCEDONY (shown) \$280**  
**BSLT-LABRADORITE (shown) \$280**  
-PLUM CHALCEDONY \$280

Large Sand Dollar Bracelet with Crystals  
**BSLT-PERIWINKLE BLUE CRYSTALS (shown) \$128**  
-GREEN CRYSTALS

Large Sand Dollar Toggle Necklace with Stones This Necklace is 17.5"  
**NSLT-GREEN CRYSTALS (shown) \$128**  
-PERIWINKLE BLUE CRYSTALS \$128  
-AQUA BLUE \$288  
CHALCEDONY \$288  
-LABRADORITE \$288



# SCALLOPS

Large & Small Scallop Pendant with Blue Chalcedony on 16" Snake Chain with 2" Removable Extender  
**PSCL&S-BLUE CHALCEDONY \$112**

Large & Small Scallop Pendant with Stones on 16" Chain with 2" Removable Extender  
**PSCL&S-AQUA CHALCEDONY (shown) \$112**  
-LABRADORITE

Silver and 14K PLATED Large Scallop Pendant with Small Starfish on 18" Chain  
**PLAPSClwSTS2T \$32** THIS IS NOT SOLID STERLING SILVER

Medium Scallop Pendant with a 14K Two-tone Small Starfish This Pendant comes on a 16" Cable Chain  
**PSCMw/STS2T \$72**

Large Scallop Pendant with Stone on 16" Chain with 2" Removable Extender  
**PSCL-CARIBBEAN BLUE CHALCEDONY (shown) \$92**

Three Medium Scallop Pendant on 16" Cable Chain  
**PSC3 \$72**

XL Scallop Pendant on a 16" Snake Chain with a 2" Removable Extender  
**PSCXL \$80**

XL Scallop Pendant with 14K Two Tone Small Scallop on a 16" Snake Chain with a 2" Removable Extender  
**PSCXL-STS2T \$88**

Small Scallop Posts  
**ESCSF \$40**

Small Scallop French Wire Earring  
**ESCSF \$40**

Small Scallop French Wire Earring with Stone  
**ESCSF-STONE \$56**  
-AQUA CHALCEDONY (shown)  
-BLUE CHALCEDONY  
-PLUM CHALCEDONY  
-AMETHYST LABRADORITE  
-PERIWINKLE BLUE  
-CRYSTALS  
-GREEN CRYSTALS  
-POWDER BLUE CRYSTALS

Small Scallop on French Wire Earring with Pearl  
**ESCSF-PRL \$52**

Medium Scallop French Wire Earrings with Pearl  
**ESCM-PRL \$64**

Medium Scallop French Wire Earring with Stone  
**ESCM-STONE \$72**  
-BLUE CHALCEDONY (shown)

-AQUA CHALCEDONY  
-PLUM CHALCEDONY  
-AMETHYST  
-LABRADORITE  
-PERIWINKLE BLUE CRYSTALS

Medium Scallop French Wire Earrings with 14K Two-Tone Small Starfish  
**ESCMwSTS2T \$80**

Medium Scallop French Wire Earrings  
**ESCMF \$48**

Large Scallop French Wire Earrings with Caribbean Blue Chalcedony  
**ESCL-CARIB CHAL \$120**

Large and Small Scallop Earrings on French Wire  
**ESCS&L \$96**

Silver and 14K PLATED XL Scallop Pendant with Medium Starfish on a PLATED 18" Chain  
**PLAPSCXLwSTM2T \$32** THIS IS NOT SOLID STERLING SILVER

Small Scallop Bracelet on Aqua Chalcedony  
**BSCS3-AQUA CHALCEDONY (shown) \$148**

Medium Scallop Bracelet with Stones or Crystals  
**BSCM2-LABRADORITE (shown) \$160**  
-AQUA CHAL  
-BSCM2-CRYSTALS \$136  
-GREEN CRYSTALS  
-PERIWINKLE BLUE CRYSTALS  
-POWDER BLUE CRYSTALS

Scallop Toggle Bracelet with Plum Chalcedony  
**BSCLT-PLUM CHALCEDONY (shown) \$280**  
-AMETHYST

Large Scallop Toggle Bracelet with Genuine Stones or Crystals

**BSCLT-BLUE CHALCEDONY (shown) \$280**  
-CARIBBEAN BLUE CHALCEDONY \$280  
-LABRADORITE \$280  
-AQUA CHALCEDONY \$280  
-PERIWINKLE BLUE CRYSTALS \$128  
-GREEN CRYSTALS \$128

Large Scallop Toggle Necklace with Crystals or Stones This Necklace is 17.5"  
**NSCLT-PERIWINKLE BLUE CRYSTALS (shown) \$144**  
-GREEN CRYSTALS \$144  
-AQUA CHALCEDONY \$288  
-LABRADORITE \$288

PSCL&S-BLUE CHALCEDONY



PSCL&S-AQUA CHALCEDONY



PLAPSClwSTS2T



PSCMw/STS2T



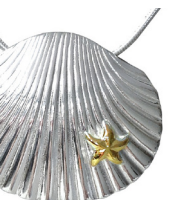
PSCL-CARIBBEAN BLUE CHALCEDONY



PSC3



PSCXL-STS2T



PLAPSCXLwSTM2T



ESCP

ESCSF

ESCSF-AQUA CHALCEDONY

ESCSF-PRL

ESCM-PRL

ESCM

ESCMwSTS2T

ESCMF

ESCL-CARIB CHAL

ESCS&L

BSCS3 W/ AQUA CHALCEDONY



BSCM2 w/ LABRADORITE



NSCLT PERIWINKLE BLUE CRYSTALS



BSCLT-PLUM CHALCEDONY



BSCLT-BLUE CHALCEDONY





**STARFISH**

Large Starfish Pendant with Stone and Pearl on 16" Chain with 2" Removable Extender  
**PSTLI-AQUA CHALCEDONY (shown) \$120**

-PLUM CHALCEDONY  
-LABRADORITE  
-AMETHYST  
-POWDER BLUE CRYSTALS  
-GREEN CRYSTALS  
-PERIWINKLE BLUE CRYSTALS

Large Starfish Pendant with Blue Chalcedony and Pearl  
**PSTLI-BLUE CHALCEDONY \$120**

Scallop, Sand Dollar and Starfish Pendant on 16" Chain  
**P3S \$72**

Scallop, Sand Dollar and Starfish French Wire Earrings  
**E3S \$84**

Medium Starfish French Wire Earrings  
**ESTMF \$52**

Medium Starfish French Wire Earrings with Stone  
**ESTMF-STONE \$72**  
-PLUM CHALCEDONY (shown)  
-BLUE CHALCEDONY CARIB  
-BLUE CHALCEDONY AQUA  
-CHALCEDONY  
-AMETHYST  
-LABRADORITE (shown)  
-POWDER BLUE CRYSTAL  
-GREEN CRYSTAL  
-PERIWINKLE BLUE CRYSTAL

Medium Starfish Earrings on French Wire with Pearl  
**ESTMF-PRL \$64**

Medium Starfish Post Earrings  
**ESTMP \$52**

Small Starfish Post Earrings  
**ESTSP \$36**

Medium Starfish Bracelet with Aqua Chalcedony  
**BSTM3-AQUA CHAL \$224**

Medium Starfish Bracelet on Blue Quartz  
**BSTM3-BLUE QTZ \$148**

Medium Starfish Bracelet on Labradorite  
**BSTM3-LAB \$224**

Large Starfish Bracelet with Blue Quartz  
**BSTL-BLUE QTZ \$148**

Large Starfish Bracelet on Light Green Quartz  
**BSTL-LT GRN QTZ \$148**

Large Starfish Bracelet with Caribbean Blue Chalcedony  
**BSTL-CARIB CHAL \$280**

Large Starfish Toggle Necklace with Genuine Stone  
**NSTLT-AQUA CHALCEDONY (shown) \$288**  
-LABRADORITE \$288

Starfish Ring  
**RSTL \$76**

Large Starfish Toggle Necklace with Crystals  
**NSTLT-POWDER BLUE \$144**  
**CRYSTALS (shown)**  
-GREEN CRYSTALS  
-PERIWINKLE BLUE CRYSTALS

**PSTLI-AQUA CHALCEDONY**



**PSTLI-BLUE CHALCEDONY**



**P3S**



**E3S**



**ESTMF**



**ESTMF LAB**



**ESTMF-PRL**



**ESTMP**



**ESTSP**

**ESTMF LAB**



**BSTM3-AQUA CHAL**



**BSTM3 BLUE QTZ**



**BSTM3 LABRADORITE**



**BSTL-BLUE QTZ**



**BSTLT-LT GRN QTZ**



**BSTL-CARIB CHAL**



**NSTLT AQUA CHAL**



**RSTL**



**NSTLT-POWDER BLUE CRYSTALS**



**CORAL**

Large Round Coral Pendant with Small 14K Two-Tone Starfish on 16" Snake Chain with 2" Removable Extender  
**PCORALSTS2T \$80**

Large Round Coral French Wire Earrings with Small 14K Two-Tone Starfish  
**ECORALSTS2T \$88**

Small Round Coral French Wire Earrings with 14K Two-Tone Small Starfish  
**ECORAL-S-STS2T \$72**

Small Round Coral Pendant with Small 14K Two-Tone Starfish on 16" Chain  
**PCORAL-S-STS2T \$68**

Medium Coral Teardrop Pendant with 14K Two-Tone Starfish on 16" Cable Chain  
**PCORALTEARSTS2T \$72**

Medium Coral Teardrop French Wire Earrings with 14K Two-Tone Starfish  
**ECORALTEARSTS2T \$76**

Large Coral Puff Pendant with Trapped Gold Filled Ball  
**PCORALPUFF-L-GFB \$128**

Large Coral Puff Pendant with Trapped Cat Eye Stone on 16" Chain with 2" Removable Extender  
**PCORALPUFF-L w/GREEN CAT EYE (shown) \$128**  
**-BLUE CAT EYE**

Small Coral 1/2 Puff Pendant with Trapped Cat Eye Stone on 16" Cable Chain  
**\$72**  
**P1/2PUFF-BLUE or GREEN CAT EYE**

Small Coral Puff French Wire Earrings with Trapped Green Cat Eye Stone  
**\$88**  
**ECORALPUFF-GREEN CAT EYE**

Small Coral Puff French Wire Earrings with Trapped Blue Cat Eye Stone  
**\$88**  
**ECORALPUFF-BLUE CAT EYE**

Small Coral Puff French Wire Earrings with Trapped Gold Filled Ball  
**ECORALPUFF-GFB \$96**

Small Coral Puff French Wire Earring with Trapped Freshwater Pearl  
**ECORALPUFF-PRL \$96**

Large Coral Teardrop Pendant on Aqua Chalcedony Strand. Pendant Is 18" with a 2" Removable Extender.  
**PCORALTEAR-L w/ AQUA CHAL AND STRAND \$360**

Large Coral Teardrop Pendant with Trapped Aqua Chalcedony on 18" Snake Chain with 2" Removable Extender  
**PCORALTEAR-LAQUACHAL \$240**

Large Coral Teardrop Pendants with Blue or Clear CZ  
**PCORALTEAR-L-BLUE CZ**  
**PCORALTEAR2-L-CLEAR CZ \$240**

Medium Coral Teardrop Pendant with Trapped Clear CZ on 16" Snake Chain with 2" Removable Extender  
**PCORALTEARM-CLEAR CZ \$128**

Medium Coral Teardrop Pendant with Trapped Blue CZ on 16" Snake Chain with 2" Removable Extender  
**PCORALTEARM-BLUE CZ \$128**

Medium Coral Teardrop Pendant with Trapped Aqua Chalcedony on 16" Snake Chain with 2" Removable Extender  
**PCORALTEARM-AQUA CHAL \$128**

Small Coral Teardrop Pendant with Trapped Stones on 16" Bead Chain  
**PCORALTEAR-S-AQUA CHAL (shown) \$76**  
**-CLEAR CZ**  
**-BLUE CZ**

Small Coral Teardrop Earrings on French Wire with Trapped Stones  
**ECORALTEARS-AQUA CHALCEDONY (shown) \$96**  
**-CLEAR CZ**  
**-BLUE CZ**

Coral Ring with 14K Two-Tone Small Starfish  
**RCORALSTS2 \$60**

Coral Ring  
**RCORAL \$48**

Large Coral Cuff  
**CCORAL-L \$220**

Large Coral Cuff Bracelet with Blue CZ  
**CCORAL-Lw/BLUE CZ \$320**

Small Coral Cuff Bracelet with 14K Two-Tone Starfish, Scallops and Sand Dollars  
**CCORAL3S2T \$180**

**PCORALSTS2T**



**ECORALSTS2T**



**ECORAL-S-STS2T**



**PCORAL-S-STS2T**



**PCORALTEARSTS2T**



**ECORALTEARSTS2T**



**PCORALPUFF-L-GFB**



**PCORALPUFF-L w/GREEN**



**P1/2PUFF-BLUE**



**ECORALPUFF-GREEN**



**ECORALPUFF-BLUE**



**ECORALPUFF-GFB**



**ECORALPUFF-PRL**



**PCORALTEAR-L w/ AQUA CHAL AND STRAND**



**PCORALTEARLAQUACHAL**



**PCORALTEAR2-Lw/ CLEAR CZ**



**PCORALTEAR-Lw/BLUE CZ**



**PCORALTEARM-CLEAR CZ**



**PCORALTEARM-BLUE CZ**



**PCORALTEARM-AQUA CHAL**



**PCORALTEAR-S-AQUA CHAL**



**ECORALTEARS-AQUA**



**RCORALSTS2**



**RCORAL**



**CCORAL-L**



**CCORAL-Lw/BLUE CZ**



**CCORAL3S2T**





**OYSTERS, WAVES and NAUTILUS**

Oyster Bracelet with Freshwater Pearl  
**B-OYSTER-WHITE PRL**  
(shown) \$224  
PINK PRL

Oyster French Wire Earring with Freshwater Pearl  
**EOYSTERF-WHITE** (shown) \$80  
-PINK

Oyster Pendant with Freshwater Pearl on 16" Snake Chain with 2" Removable Extender  
**P-OYSTER-PINK** (shown) \$76  
-WHITE

Single Wave Pendant on 16" Snake Chain with 2" Removable Extender  
**PWAVE** \$76

Double Wave Pendant with Blue Background on 16" Snake Chain with 2" Removable Extender  
**PWAVE-D-BLUE** \$144

Single Wave Pendant with Blue Background on 16" Snake Chain with 2" Removable Extender  
**PWAVE-BLUE** \$110

Double Wave Pendant on 16" Snake Chain with 2" Removable Extender  
**PWAVE-D** \$110



**NAUTICAL & MIX-N-MATCH**

Small Anchor Pendant with 14K Two-Tone on 16" Bead Chain  
**PANCHOR-S-2T** \$36

Small Anchor French Wire Earrings with Two-Tone  
**EANCHORF2T** \$44

Small Anchor Post Earrings with 14K Two-Tone  
**EANCHOR-SP-2T** \$44

Abstract Nautilus Pendant on 16" Cable  
**PABNAUT** \$68

Solid Nautilus Pendant on 16" Snake Chain with 2" Removable Extender  
**PNAUTILUS** \$58

Abstract Nautilus French Wire Earrings  
**E-ABNAUT** \$76

Sailboat Pendant with 14K Two-Tone on Sail on 16" Cable Chain  
**PSAILBOAT2T** \$72

Silver and 14K PLATED Anchor Pendant  
**PLAPANCHOR2T** \$32  
(on 18" Plated Chain)  
**PLAPANCHOR2TC** (shown) \$32  
(on 16" Blue Cord)  
THIS PENDANT IS NOT SOLID STERLING SILVER

Silver and 14K PLATED Skipper's Wheel Pendant on 18" PLATED Chain  
**PLAPWHEEL2T** \$32  
THIS PENDANT IS NOT SOLID STERLING SILVER



B E T S Y  
F R O S T  
D E S I G N

T: 617-548-8038 | F: 978-312-1299

BETSYFROSTDESIGN@COMCAST.NET

BETSYFROSTDESIGN.COM